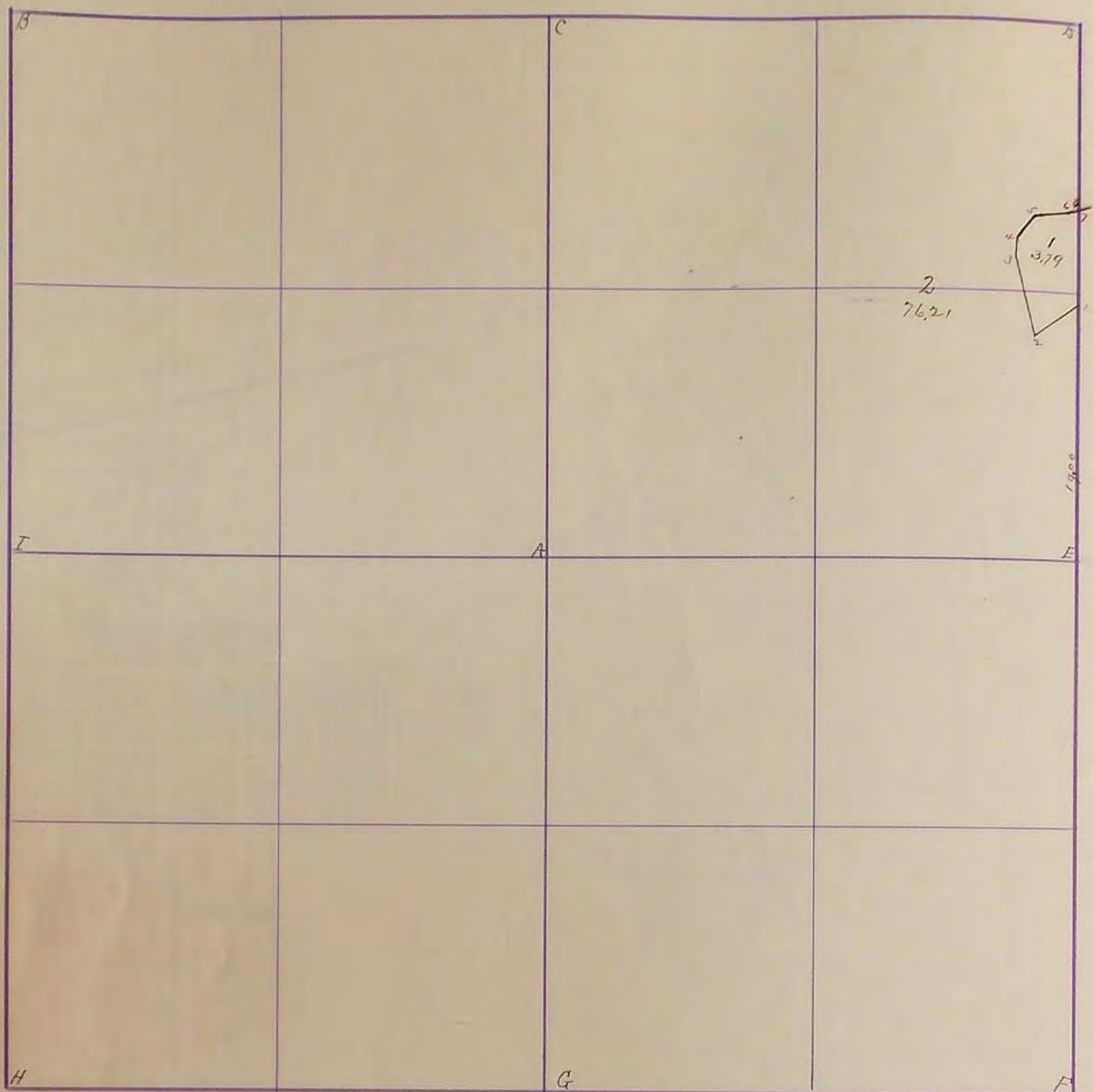


SURVEYOR'S RECORD

Section 18

Township 107

Range 40

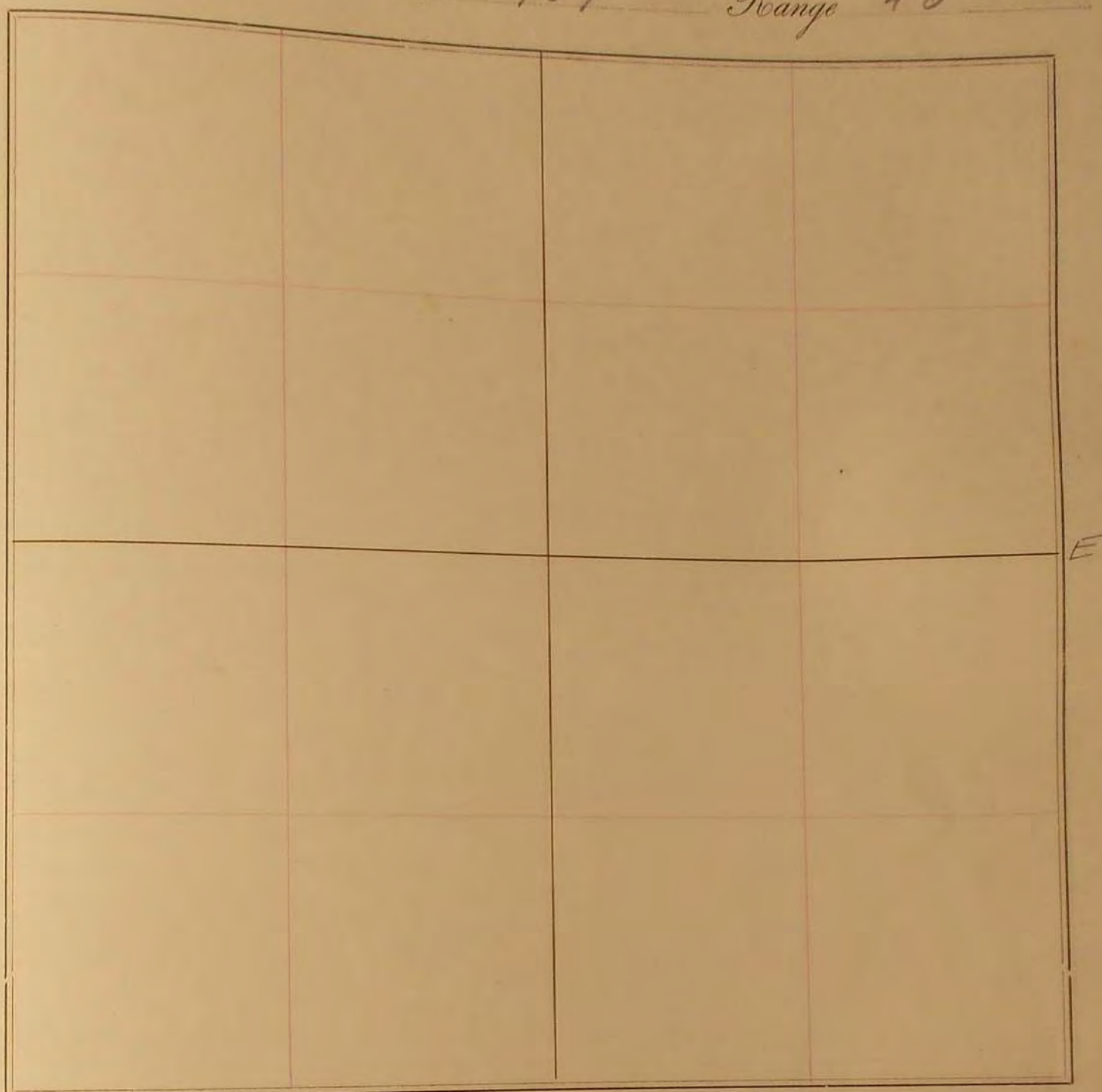


- 1 1900 North of East 1/4 Stake. Thence S. 56° W. 14.00
- 2 N. 14° W. 6.04
- 3 N. 5 1/2° E. 1.57
- 4 N. 54° E. 1.93
- 5 N. 8 1/2° E. 3.00
- 6 N. 76° E. 1.00 to section line at 7
- 7

Apr. 17-1928

"A" 3 surfaced grate 16" long F. cor. on line N. 33° W.
 F-Oak post 33' south established by previous
 survey by M. E. Intype
 "E" stone 5x12x16 - small slabs on N. 1/2 S. F. cor. 38.5'
 S.W. F. line 37' N. F. cor. 34.8' E. established on
 line with A+I.
 "I" 3 stone top & bottom 6x6x18 blue F. cor. 32.5'
 south. F. cor. 37.6' N. N. Oak cor. Post 47.6' N. E.

Section 14 SURVEY No. _____
 Town 107 Range 40



FIELD NOTES.

Apr. 19, 1928

A. 3 surfaced grate 16" long. F. Cor. on line 71. 33' 2". F. oak post 33' South Established by previous survey by McIntyre

E. Stone 5+12x16 small stones on 1745. F. cor. 35.5 S.W. F line 37' N. F. cor. 34' S.E. established on line with A+I.

I 3 stones of 4 bottom 6x6x18 blue. F. cor. ^{oak} 32.5 South. F. cor. 37.6 N.W. Oak cor. post 47.6 N.E.